
Technical Note

Adding Met Parameters to AIRNow

The list of parameters reported to AIRNow is controlled by a file in your data directory called SPECIES.DAT. It looks something like this:

```
OZONE=O3
PM10=PM10H
PM2.5=PM25H
PSI=
```

By adding to the list of available AIRNow pollutants (the names before the “=” sign), you can then add parameters and assign those to the AIRNow pollutants through the E-DAS software. However, before editing SPECIES.DAT, make a backup, and follow these rules:

- (1) No blank spaces at the end of any line. (just add “POLLUTANT=” and that’s it).
- (2) No blank lines at the end of the file.
- (3) You MUST edit with Notepad.

To add wind speed/direction, use the EPA-assigned pollutant names (WS, WD) and add them to SPECIES.DAT. The new file looks like this:

```
OZONE=O3
PM10=PM10H
PM2.5=PM25H
PSI=
WS=
WD=
```

Once this is done you can go into E-DAS Ambient and select “FTP/AIRNow->AIRNow->Select Pollutants” and assign our agency-specific parameter names to the AIRNow pollutants.

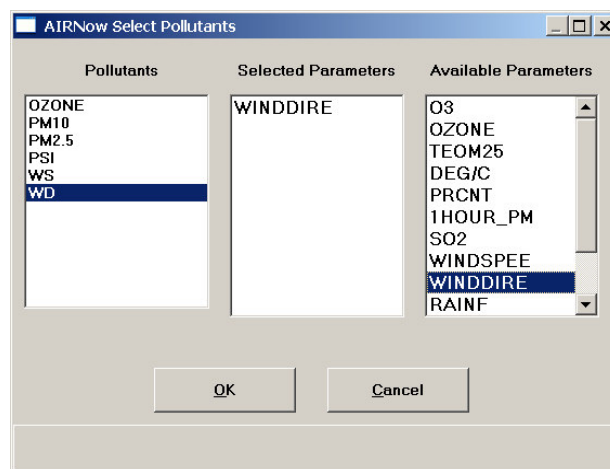


Figure 1 AIRNow Select Pollutants screen

Air Quality and Meteorological Parameters	Naming Convention for OBS files
NO (nitric oxide)	NO
NO ₂ (nitrogen dioxide)	
True measure	NO ₂ T
NO _x -NO	NO ₂
NO _y -NO	NO ₂ Y
NO _x (nitrogen oxides)	NOX
NO _y (total reactive nitrogen)	NOY
NO ₃ ion (nitrate-not adjusted for ammonium ion)	NO ₃
SO ₄ ion (sulfates-not adjusted for ammonium ion)	SO ₄
SO ₂ (sulfur dioxide)	
Conventional	SO ₂
Trace levels	SO ₂ T
CO (carbon monoxide)	
Conventional	CO
Trace levels	COT
EC (elemental carbon) – PM _{2.5}	EC
OC (organic carbon—not adjusted for O, H) – PM _{2.5}	OC
BC (black carbon at 880nm)	BC
UV-AETH (second channel of Aethalometer at 370nm)	UV-AETH
PM _{2.5} mass	PM _{2.5}
PM ₁₀ mass	PM ₁₀
Ozone	OZONE
Ambient temperature	TEMP
Wind speed	WS
Wind direction	WD
Relative humidity	RHUM
Barometric pressure	BARPR
Solar radiation	SRAD