

---

## Technical Note

# Automated Calibration Reports

---

Users of E-DAS Ambient version 5.50 have the option to print blank automatic calibration reports. In version 5.40 the option **Print Blank Calibrations** was added to the manual **E-DAS Ambient Calibration Report** screen (Figure 1). In previous versions blank calibrations were not printed.

To include blank calibrations in the manual calibration report, open the **Calibration Report** screen from the **Reports** menu. Select the following: **Sequences**, **Phases**, or **Expected Values**; a particular program **Name**; **Day**, **Month**, **Quarter**, or **Range**; **View**, **Print**, or **File**; and a **Date**. Select **Print Blank Calibrations** and click **OK**.

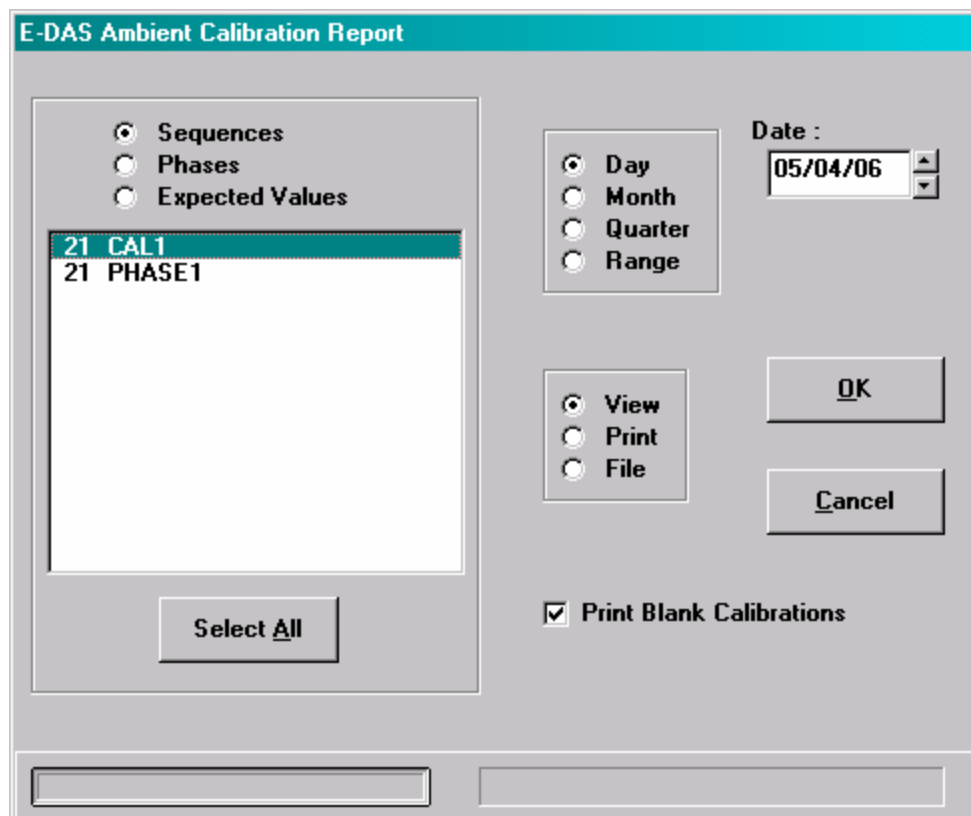


Figure 1 Cal Report screen with Print Blank Calibrations option

Printing blank automatic calibrations is the default since E-DAS Ambient version 5.50. If you need to change this setting, you must edit the **EDAS.INI** file in the **E-DAS Ambient program directory**.

---

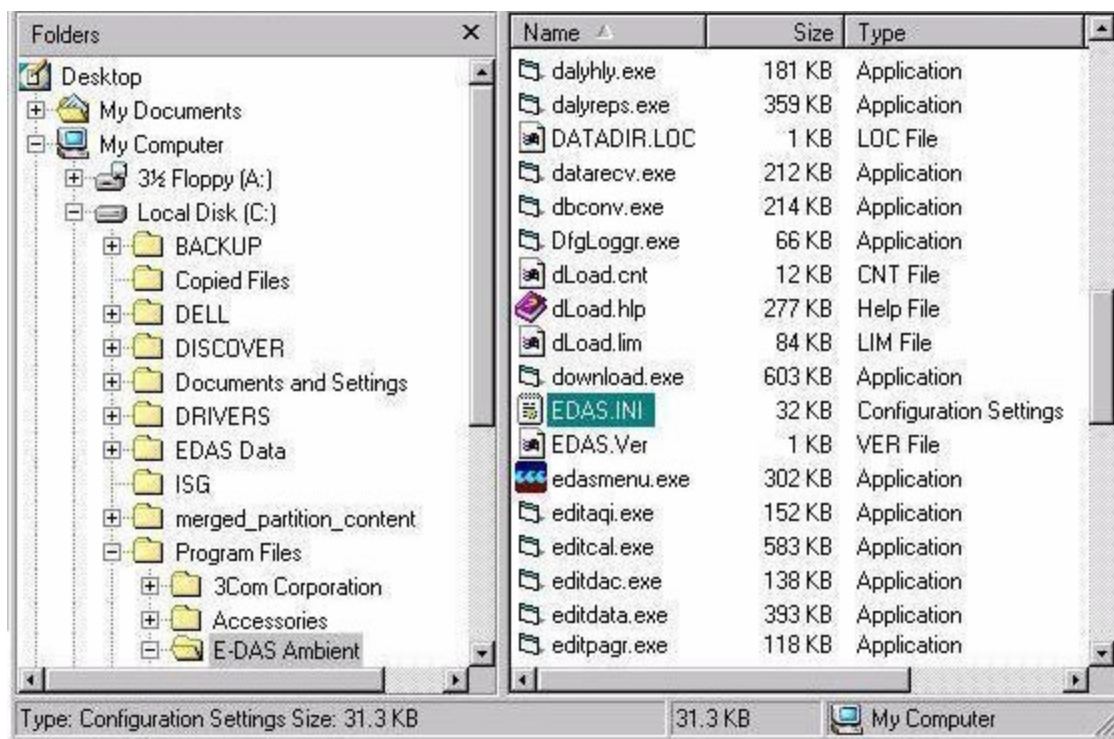
⇒ **Important!** Making incorrect changes to the EDAS.INI file can impair or disable the E-DAS Ambient software.

---

Change the EDAS.INI file as follows:

From the Windows **Start** menu on the Taskbar, select **Programs | Windows Explorer**.

In the left side of the Windows Explorer (Figure 2), double-click to open the drive, usually **Local Disk (C:)**, where the **E-DAS Ambient directory** (folder) is located.



**Figure 2** Windows Explorer with EDAS.INI file selected

Double-click the **E-DAS Ambient directory** in the left side of the Windows Explorer.

Double-click the **EDAS.INI** file in the right side of the Windows Explorer.

The EDAS.INI is a text file and will open in Notepad. From the **Notepad menu** select **Edit | Find** and enter PRINTBLANKDAYS= exactly as shown; do not bold or add punctuation.

You should find the following:

```
[AUTOCALREPS]  
PRINTBLANKDAYS=YES
```

or

```
[AUTOCALREPS]  
PRINTBLANKDAYS=NO
```

If PRINTBLANKDAYS=YES, blank cal reports will be printed. If PRINTBLANKDAYS=NO, blank cal data will be suppressed.

After you change the setting select **File | Save** and close the EDAS.INI file.