
Technical Note

Emailing Configuration Files

When you contact Agilaire Technical Support with a software problem, we may ask you to email your configuration files to us. This technical note explains where to find the files you'll need and how to copy and send them to us.

Creating Folders on the Polling PC

First follow these steps to create two directories (folders) on your polling PC for the files you will generate:

From the Windows **Start** menu on the Taskbar, select **Programs | Windows Explorer**.

In the left side of the Windows Explorer (Figure 1), double-click to open the **My Documents** directory (folder). Right-click in the right side of the Windows Explorer and select **New | Folder** from the right-click menu, or select **New | Folder** from the **File** menu. Name the new folder **config**. Create a second folder named **data** and a third named **programfiles**.

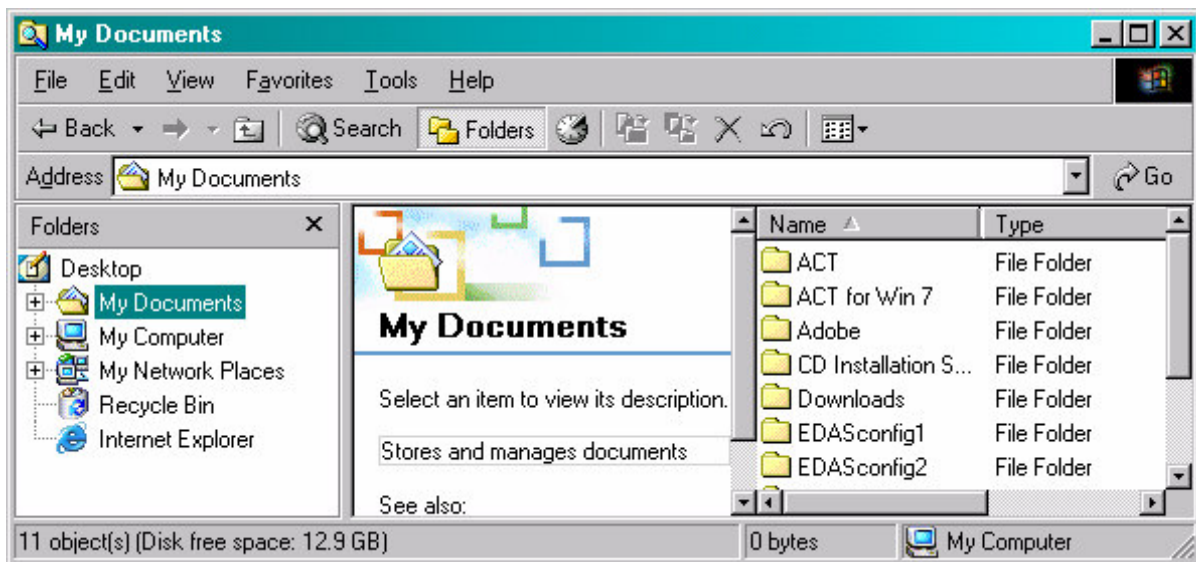


Figure 1 Windows Explorer with My Documents open

Copying Files from the Program Directory

Copy the EDAS.INI file as follows:

In the left side of the Windows Explorer (Figure 1), double-click to open the drive where the **E-DAS Ambient program directory** is located, usually **My Computer | Local Disk (C:) | Program files | E-DAS Ambient**. Double-click to open the **E-DAS Ambient directory** in the left side of the Windows Explorer.

Right-click the **EDAS.INI** file in the right side of the Windows Explorer and select **Copy** from the right-click menu

In the left side of the Windows Explorer, right-click **programfiles** and select **Paste** from the right-click menu.

Next, sort the files in the program directory by **Type** and copy all files with the extension **.DAT** Paste them into the **programfiles** folder.

Leave the Windows Explorer open while you copy files using the E-DAS software.

Copying Files in the E-DAS Software

To copy configuration files, secondary configuration files, or data files in the **E-DAS software**, select **Utilities | Copy Files** from the main menu. In the **Copy to** window of the **Copy Files** screen (Figure 2), double-click **Documents and Settings**.

In the **Documents and Settings** directory, double-click your **user name**. In the directory for your user name, double-click **My Documents | config**.

Under **Choose items to be copied** select **Configuration Files** and **Secondary Configuration Files**.

Click the **Copy** button.

Go back to the **Copy files to** window in the Copy Files screen and double-click **My Documents**.

Double-click **data**.

In the **Choose items to be copied** window select **Data Files**.

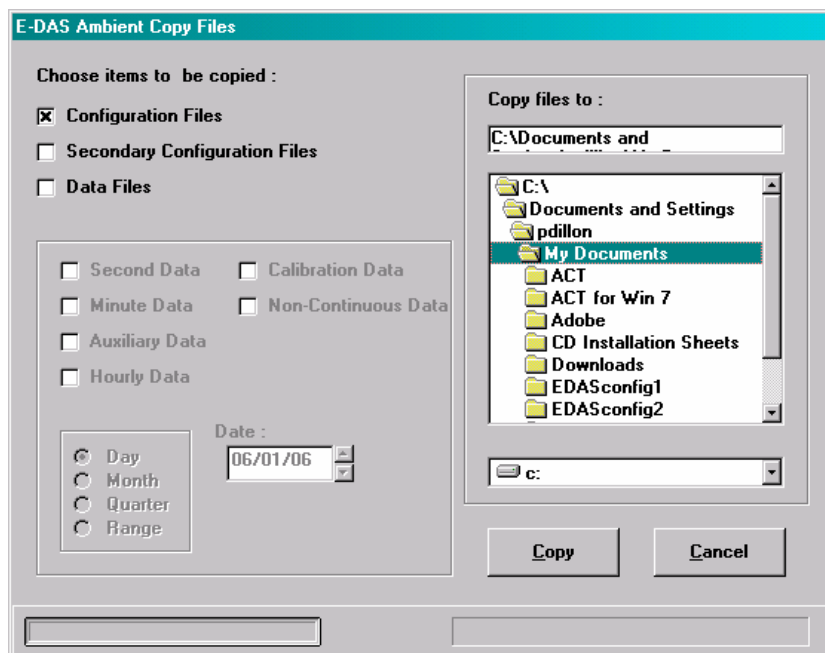


Figure 2 Copy Files screen from the Utilities menu

Select a data type and a time period for the data.

Click the **Copy** button.

Emailing the Files

If you double-click the config, data, and program files folders in the left window of the Windows Explorer you should see the files you copied in the right side of the Windows Explorer.

Depending on your operating system, you may be able to zip the files from the Windows Explorer. Right-click the **config** folder and select **Send To | Compressed Folder**. Repeat for the other two folders. If **Compressed Folder** is not available on the right-click menu, zip the files with another utility, such as WinZip or 7-Zip. Zip each folder.

Email the zipped files to **support@agilairecorp.com**.