
Technical Note

Setting the Time in E-DAS Ambient and Digi-Trend

Correctly configuring time zones and the master timekeeper is essential for running E-DAS Ambient properly. Digi-Trend requires that the master timekeeper be selected but not the time zone. These settings are made in the **Set System Parameters** screen.

Configuring the Master Time

To configure time in either E-DAS or Digi-Trend, select **Set System Parameters** from the **Setup** menu (Figure 1).

You will see the **Set System Parameters** screen (Figure 2). Select a **Master Time**. The default is **Logger**.

Select one of the following to determine which device's clock will be used to synchronize the data logger and the central computer:

Computer – Select this option for the PC to be the master timekeeper. If the PC is the master it sets the time on all loggers to match the PC clock when it polls.

► **Note:** Because PC clocks can drift significantly over time, Agilaire recommends that the data logger be the master timekeeper. ESC data loggers use a crystal-based clock that is more accurate than a PC clock.

Logger – Select this option for the first polled data logger to supply the time for the system and reset the time on the PC. The PC will then set the time on the other loggers as it polls.

Disabled – Select this option for no automatic time synchronization to take place. The operator should periodically check the computer and data logger time and correct them manually.

Configuring the Time Zone

In the E-DAS Ambient **Set System Parameters** screen (Figure 2), select a **Time Zone**. This field will not be in the Digi-Trend screen.

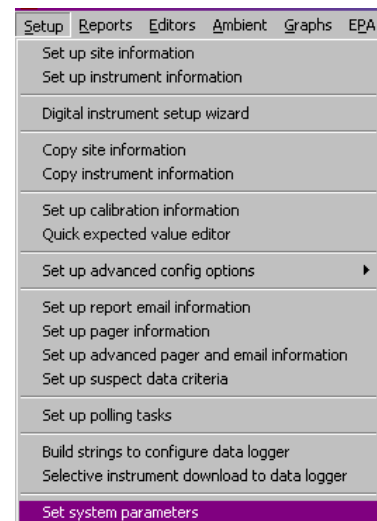


Figure 1 Setup menu

Select the **Time Zone** (Figure 3) where the central PC is located. This specification is important for air quality networks with data loggers in different time zones because EPA requires that data be reported according to the time zone in which the data logger is located, yet time must be synchronized across the network and the central PC must request data for the correct time period.

Time Zones for Polling

If the PC clock gets ahead of the logger clock and the E-DAS Ambient software polls every hour, the poll will begin before the logger has the data stored and won't collect any data. The PC will continue to poll according to schedule without getting data.

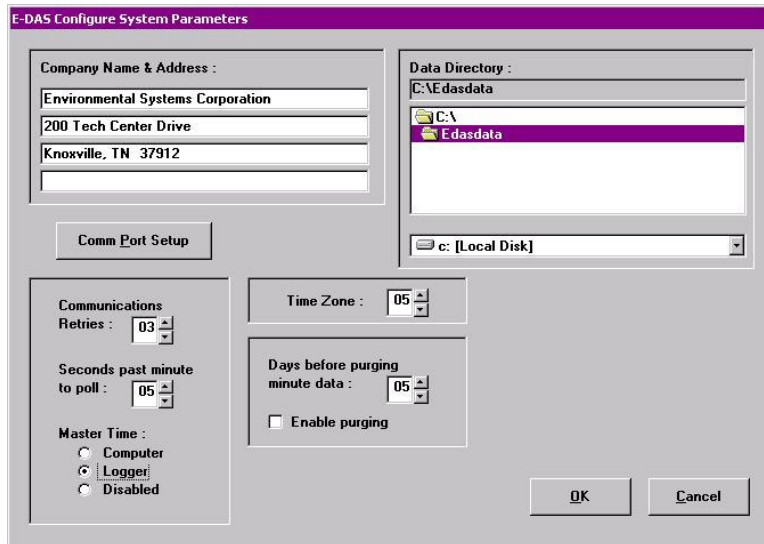


Figure 2 Configure System Parameters screen

❖ **Example:** If the PC is set to time zone 5 (Eastern Time) and the data logger is set to time zone 6 (Central Time) and they are both on standard time the PC will try to poll for data before the logger has it stored. The PC needs to be set to time zone 6 to make it poll at the correct time. The same configuration applies if the logger and the PC are not in the same standard or daylight savings time.

Zone	Value
Atlantic Time	4
Eastern Time	5
Central Time	6
Mountain Time	7
Pacific Time	8

Figure 3 Time zones for polling

Time Zones for Automatic Reports

If any of your data loggers are in a different time zone from your PC or in different Standard and Daylight Savings times, you need to change a setting in the **EDAS.INI** file to enable the E-DAS Ambient software to compensate for the time difference when automatic reports are generated. The **EDAS.INI** file is a text file located in the **Program Directory** where E-DAS Ambient was installed (usually C:\Program Files\E-DAS Ambient).

⇒ **Important!** Making incorrect changes to the EDAS.INI file can impair or disable the E-DAS Ambient software.

Change the EDAS.INI file as follows:

From the Windows **Start** menu on the Taskbar, select **Programs | Windows Explorer**.

In the left side of the Windows Explorer (Figure 4), double-click to open the drive, usually **Local Disk (C:)**, where the **E-DAS Ambient directory** (folder) is located.

Double-click the **E-DAS Ambient directory** in the left side of the Windows Explorer.

Double-click the **EDAS.INI** file in the right side of the Windows Explorer.

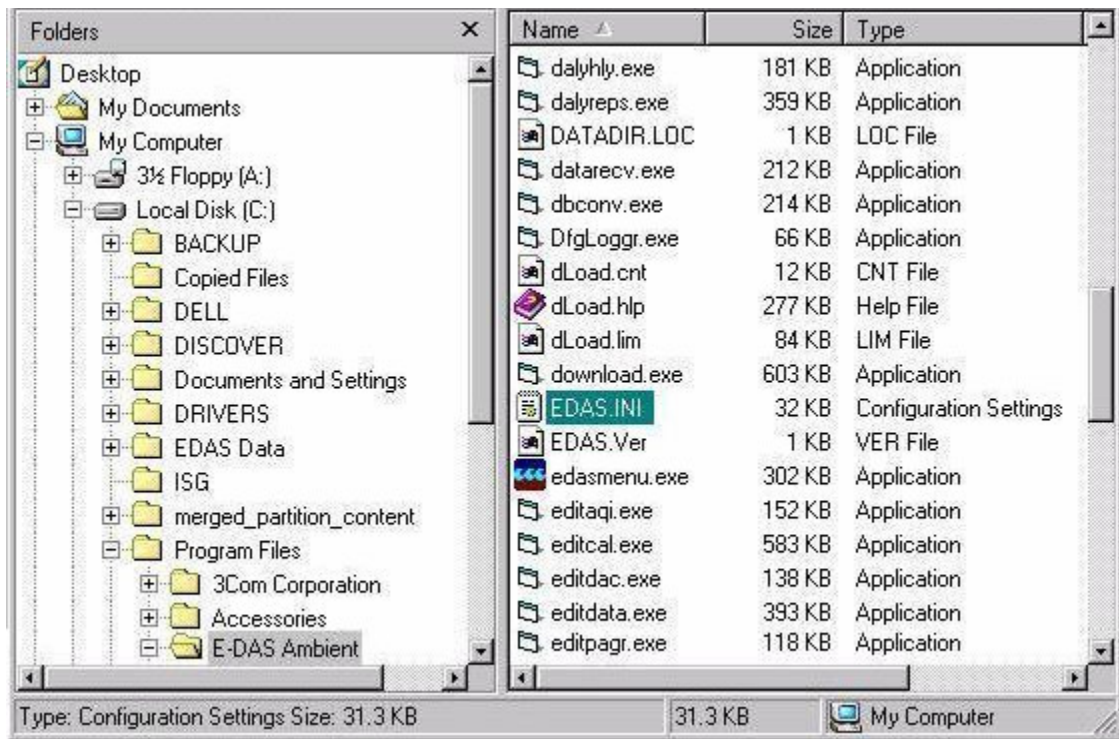


Figure 4 Windows Explorer with EDAS.INI file selected

The EDAS.INI will open in Notepad or WordPad. From the **Notepad** or **WordPad** menu select **Edit | Find** and enter **ADJUSTTIME=** exactly as shown; do not bold or add punctuation or spaces. Click **Find Next** and you will see the following setting:

ADJUSTTIME=NO

Change the setting to ADJUSTTIME=YES.

From the **File** menu select **Save**, then **Exit**. The next time you open the E-DAS Ambient menu the software will adjust the ending hour of the report to compensate for the time difference between the logger and the PC.